



# DOM HENRIQUE VILLAS

CASCAIS  PAREDE

BOOK - PLANTAS

PROMOTOR IMOBILIÁRIO



Portugal Singular Realities



Portugal Singular Realities

## MASTER PLAN

- Área total do terreno = 1.889,20m<sup>2</sup>
- Índice de construção = 1.648m<sup>2</sup>
- Média m<sup>2</sup>/fogo (moradia)= 274 m<sup>2</sup>
- Densidade habitacional = 6 Fogos (Moradias)
- Moradias T3 Duplex com Cave
- Áreas Comuns de Regime de Propriedade Horizontal
- Estacionamento interior e exterior
- Jardim privativo





Portugal Singular Realities

# PLANTAS



Portugal Singular Realities

# VILLA 1

**Área Total Privativa: 371m<sup>2</sup>**

Área Bruta Construída: 284m<sup>2</sup>

Área de Jardim Privativo: 87 m<sup>2</sup>



Piso 1



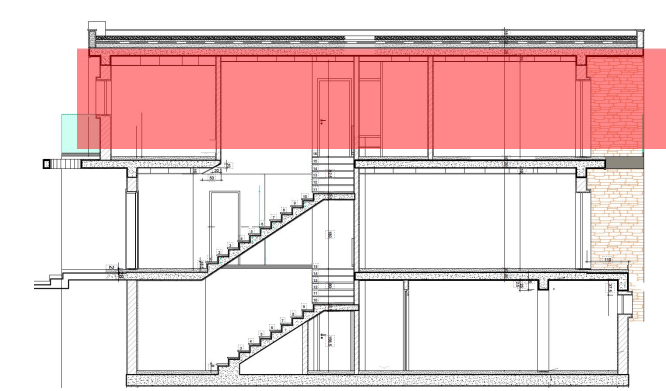
Rés do Chão



Cave/Garagem

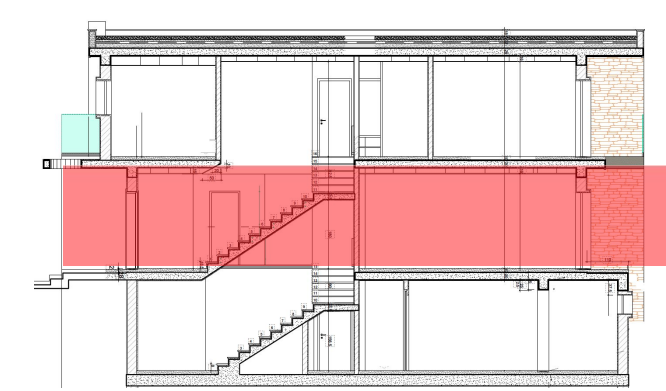


**VILLA 1**  
Piso 1 (Primeiro andar)



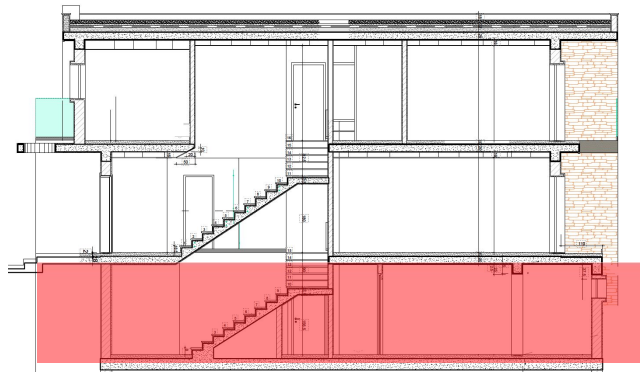


**VILLA 1**  
Piso Rés do Chão





**VILLA 1**  
Cave / Garagem





Portugal Singular Realities

# VILLA 2



Área Total Privativa: 308m<sup>2</sup>

Área Bruta Construída: 284m<sup>2</sup>

Área de Jardim Privativo: 21 m<sup>2</sup>



Piso 1



Rés do Chão



Cave/Garagem





**VILLA 2**  
Piso 1 (Primeiro andar)





## VILLA 2

### Piso Rés do Chão



# VILLA 2

## Cave / Garagem

Plantas



Portugal Singular Realities

# VILLA 3



Área Total Privativa: 326m<sup>2</sup>

Área Bruta Construída: 284m<sup>2</sup>

Área de Jardim Privativo: 41 m<sup>2</sup>



Piso 1



Rés do Chão

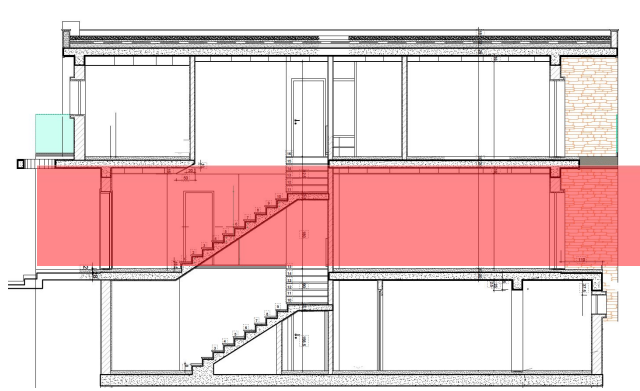


Cave/Garagem



**VILLA 3**  
Piso 1 (Primeiro andar)

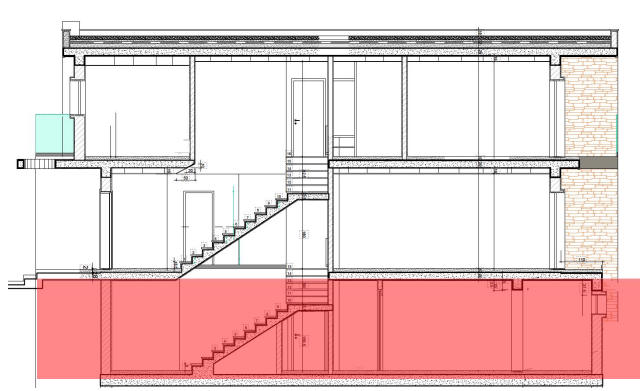
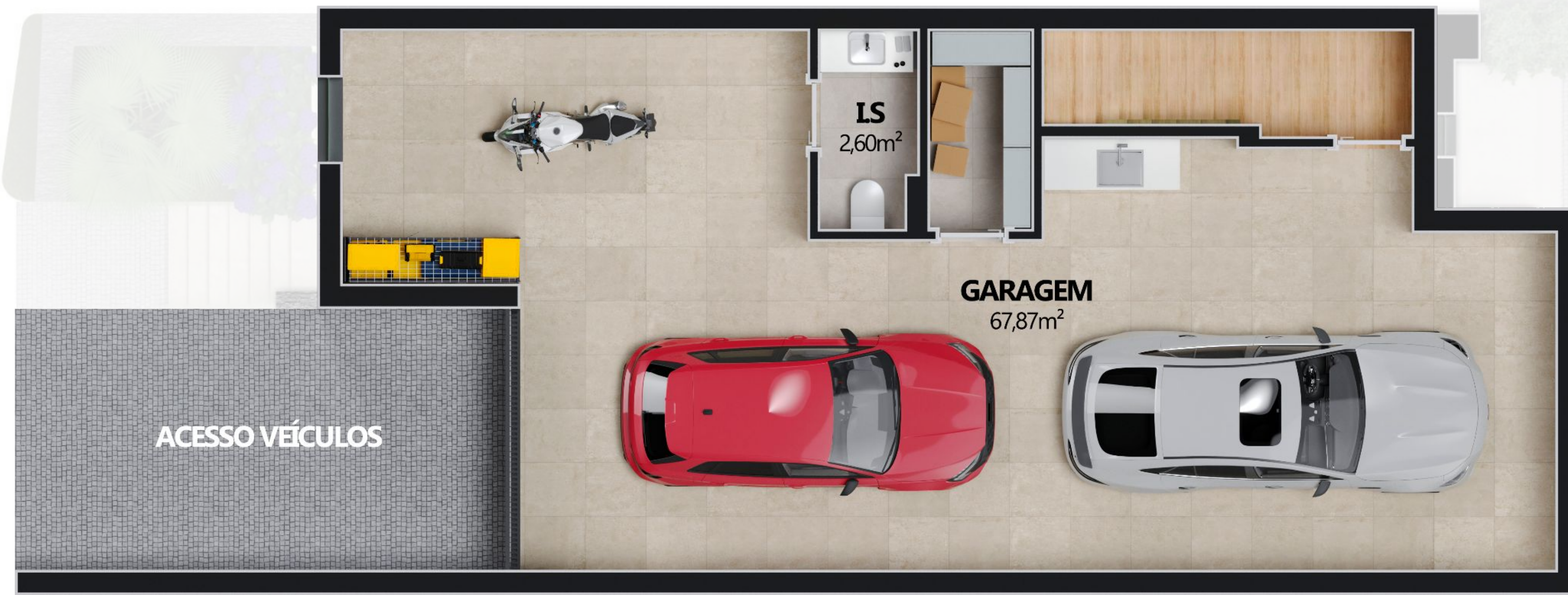
Plantas



# VILLA 3

## Piso Rés do Chão

Plantas



**VILLA 3**  
Cave / Garagem



Portugal Singular Realities

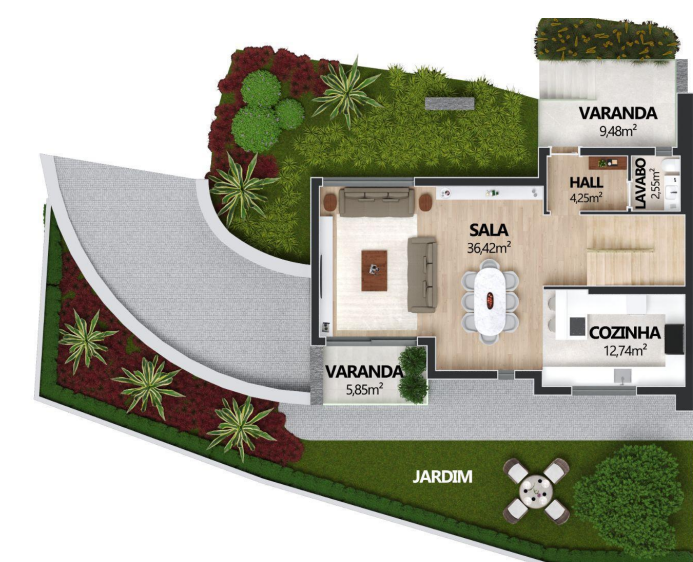
# VILLA 4



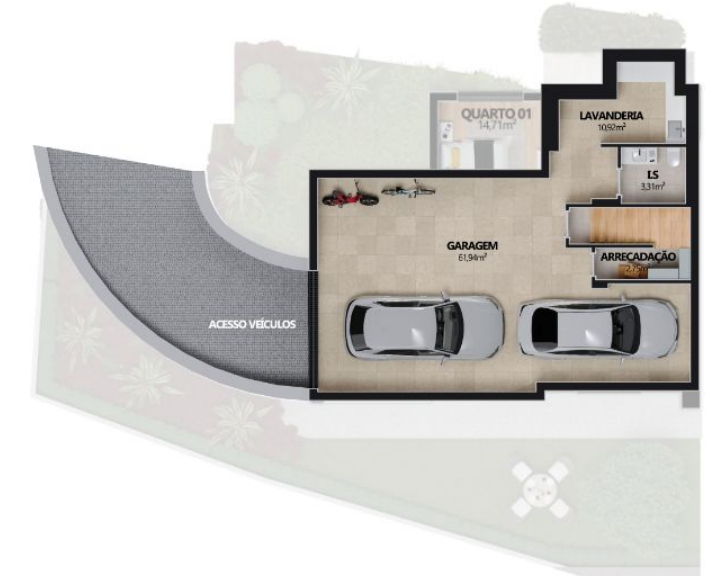
**Área Total Privativa: 337m<sup>2</sup>**  
Área Bruta Construída: 271m<sup>2</sup>  
Área de Jardim Privativo: 65 m<sup>2</sup>



Piso 1



Rés do Chão



Cave/Garagem

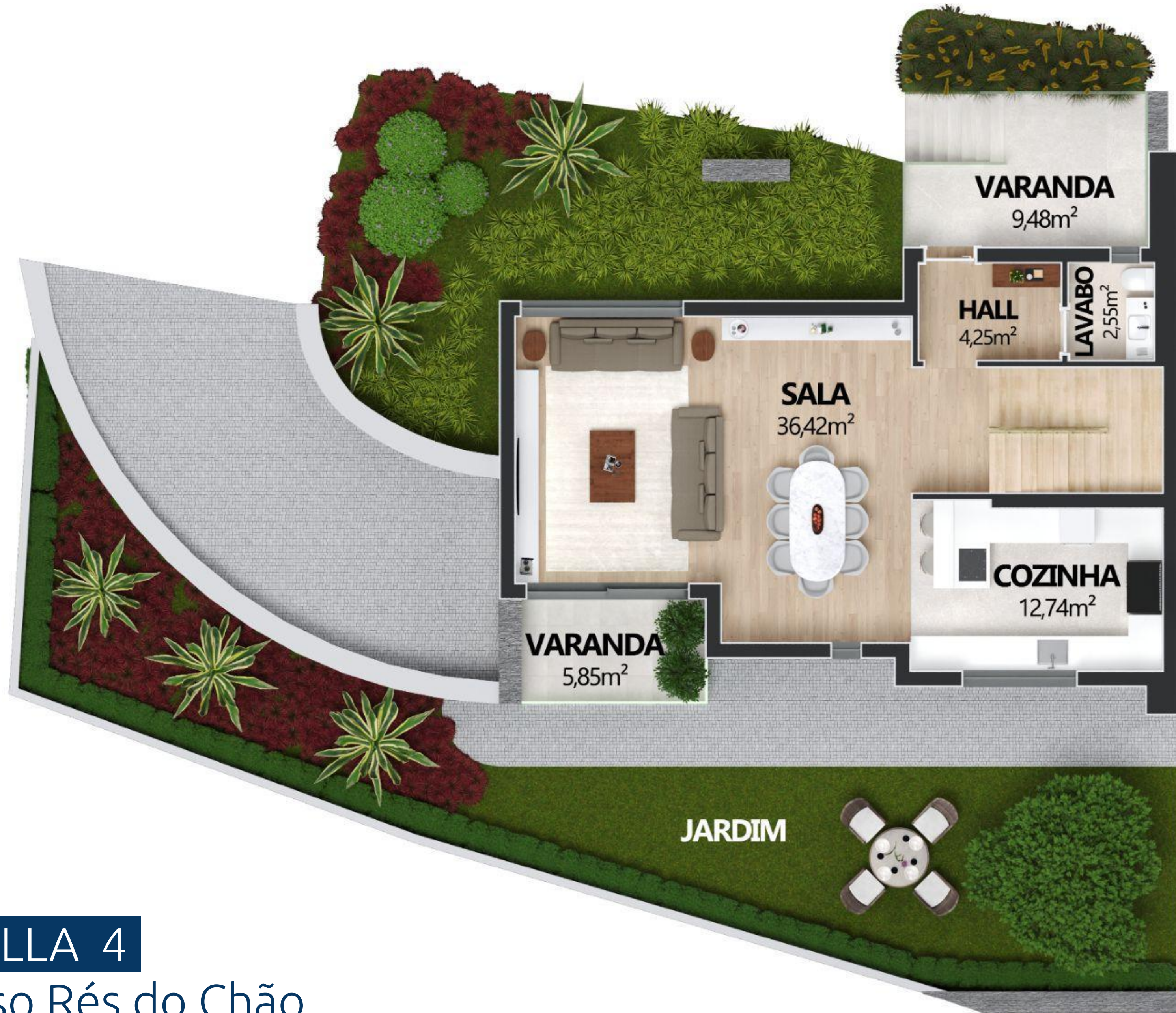
Plantas





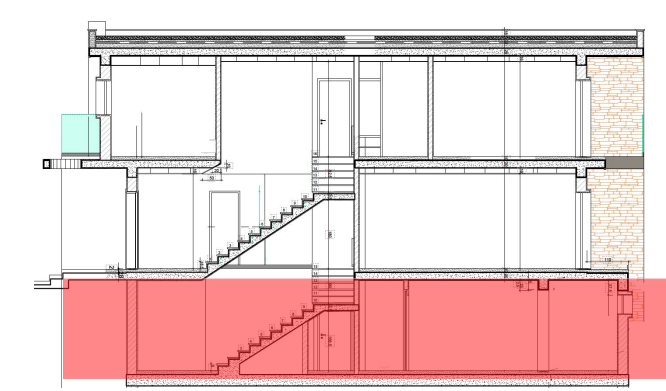
# VILLA 4

Piso 1 (Primeiro andar)



# VILLA 4

## Piso Rés do Chão



**VILLA 4**  
Cave / Garagem



Portugal Singular Realities

# VILLA 5



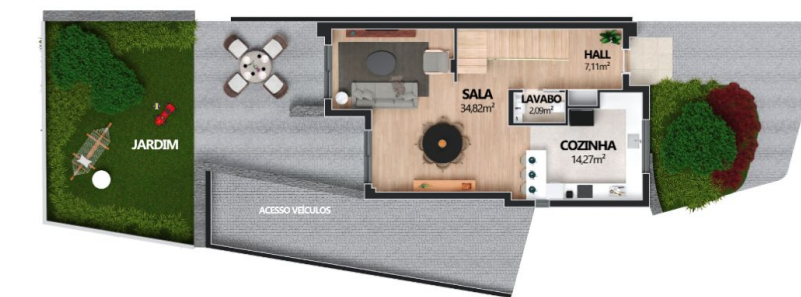
**Área Total Privativa: 314m<sup>2</sup>**

Área Bruta Construída: 269m<sup>2</sup>

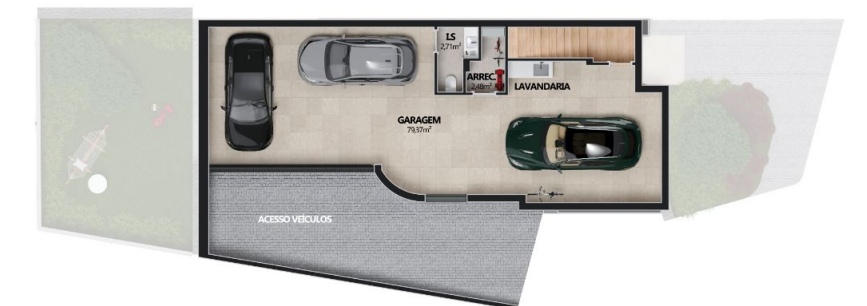
Área de Jardim Privativo: 45 m<sup>2</sup>



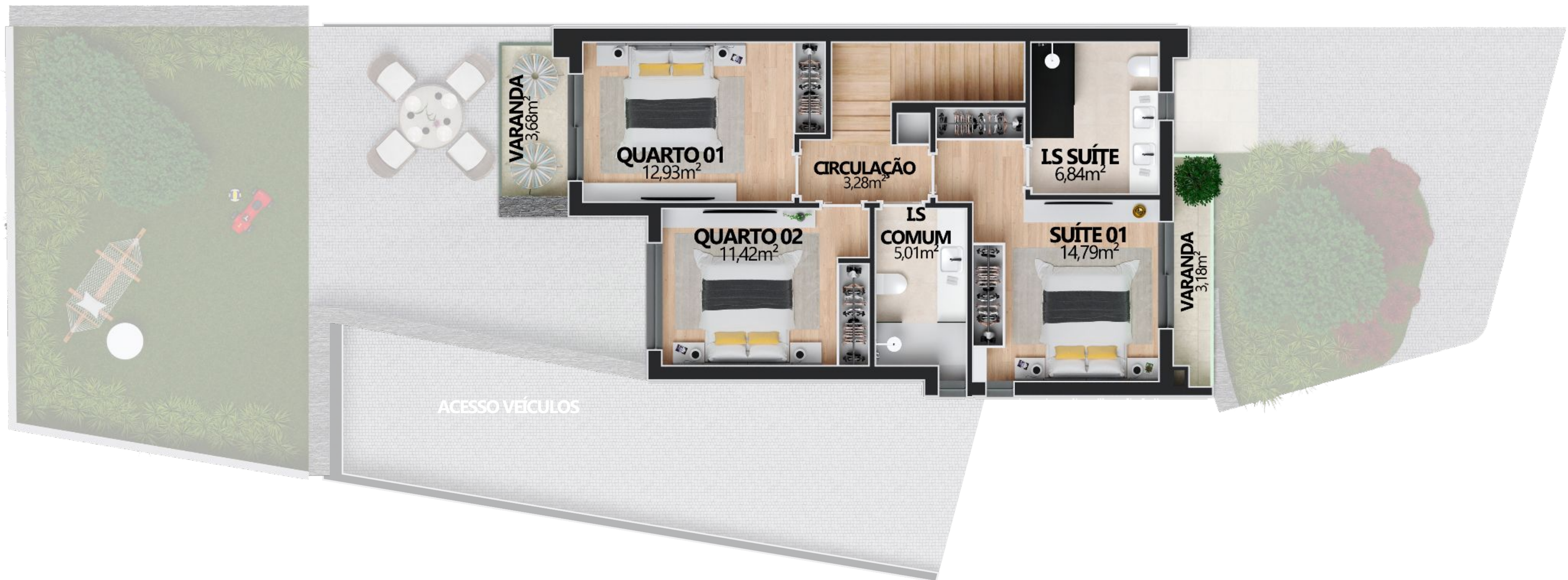
Piso 1



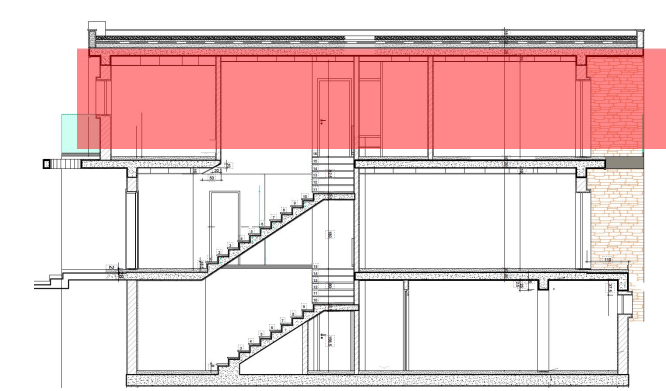
Rés do Chão

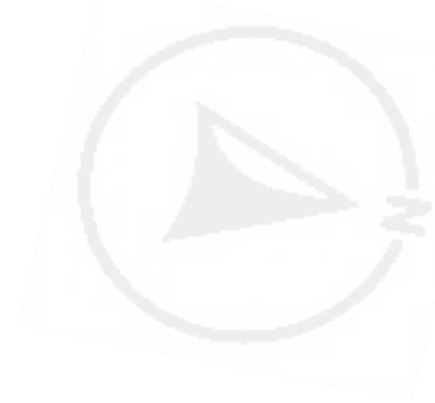


Cave/Garagem

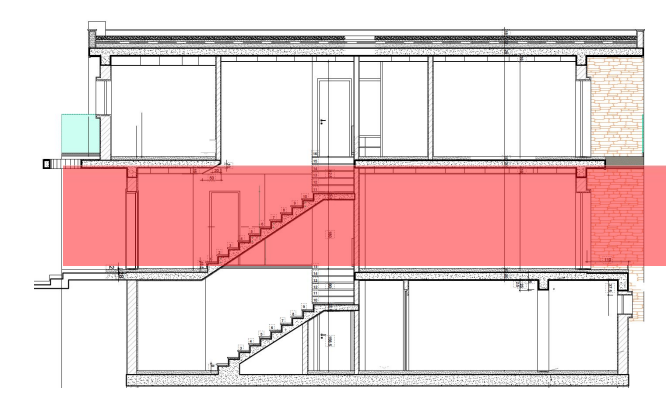


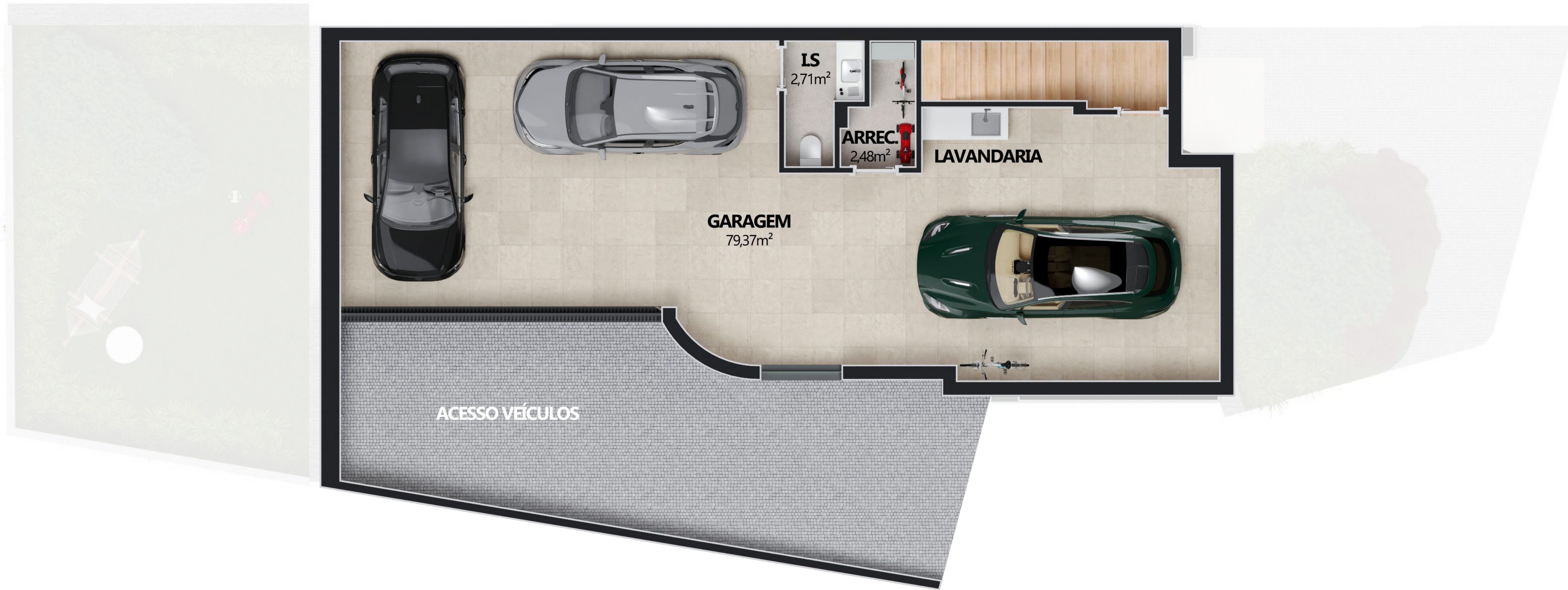
**VILLA 5**  
Piso 1 (Primeiro andar)



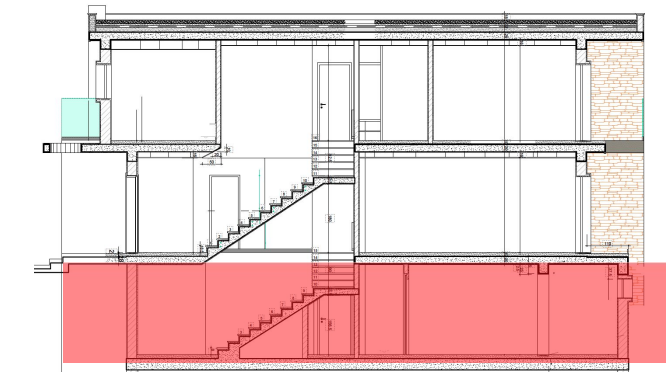


**VILLA 5**  
Piso Rés do Chão





**VILLA 5**  
Cave / Garagem





Portugal Singular Realities

# VILLA 6



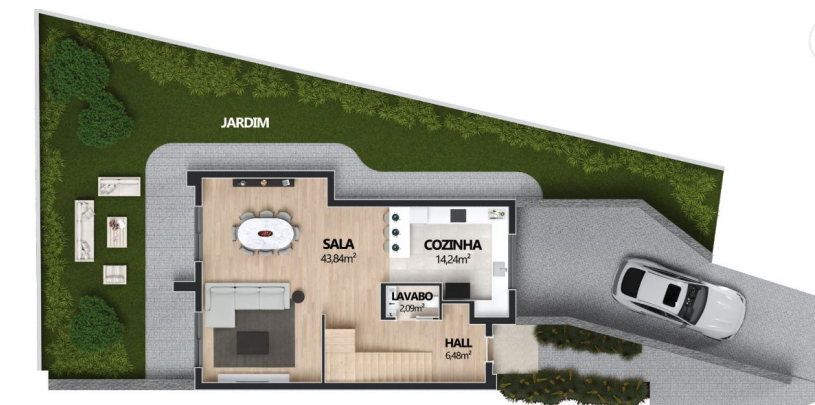
Área Total Privativa: 360m<sup>2</sup>

Área Bruta Construída: 253m<sup>2</sup>

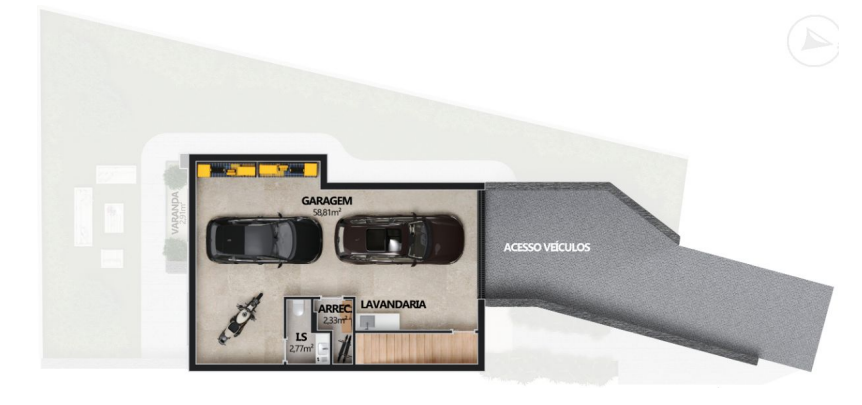
Área de Jardim Privativo: 107 m<sup>2</sup>



Piso 1



Rés do Chão



Cave/Garagem

Plantas

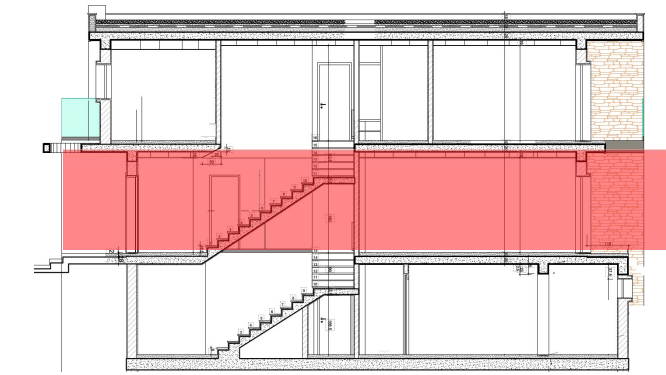
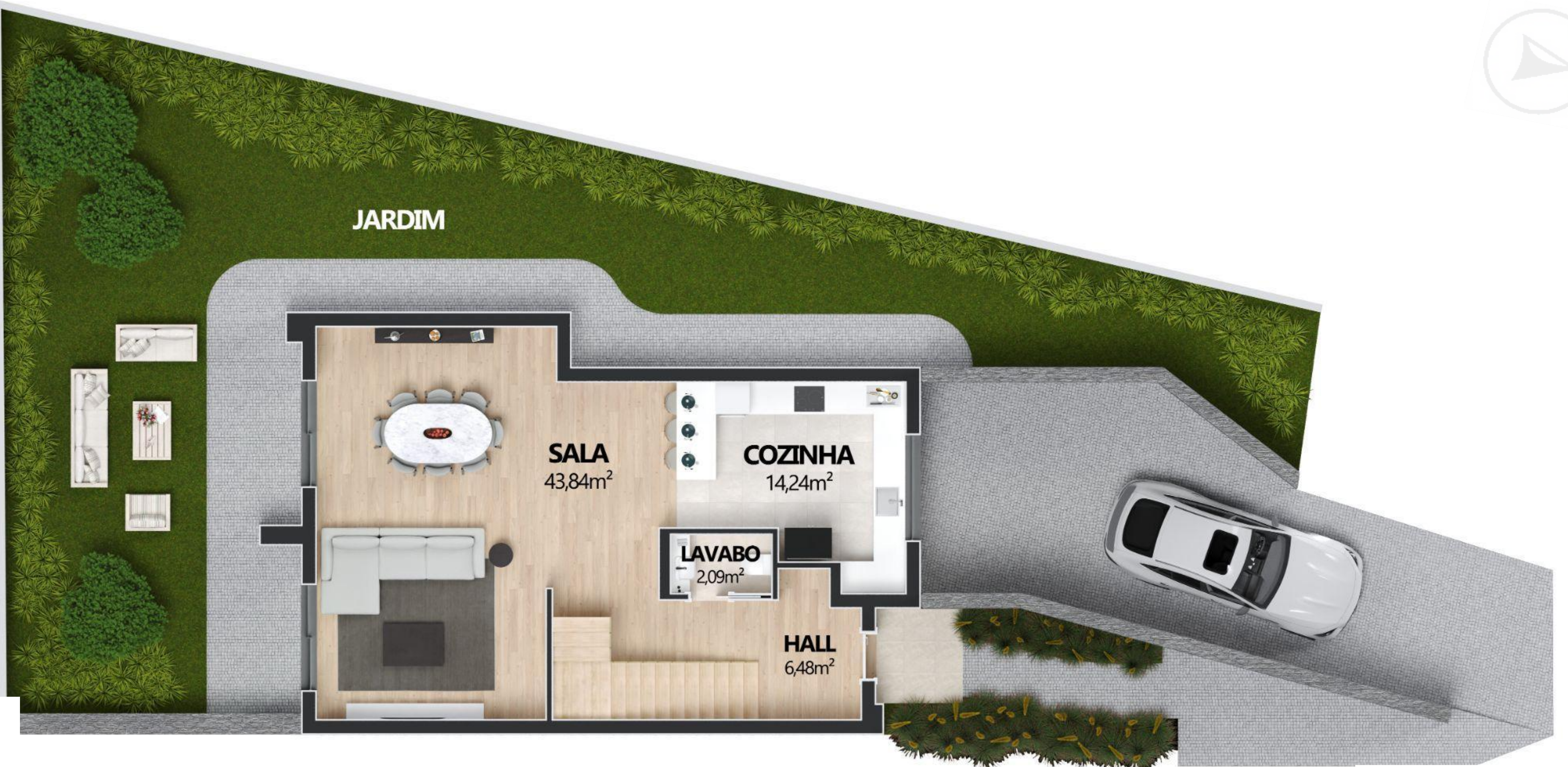




# VILLA 6

## Piso 1 (Primeiro andar)

Plantas



# VILLA 6

## Piso Rés do Chão

Plantas



**VILLA 6**  
Cave / Garagem



Promotor Imobiliário:



Portugal Singular Realities